

Reduced Glare

VECO

DOWNLIGHT SERIES

A series of downlights with a simplistic design that is available in various sizes, shapes, and finishing. Incorporating ELR's signature modular concept design, LED modules are fully interchangeable with various choices to provide optimal illumination for all kinds of spaces.



Future proof with upgradeable module



Multiple accessories options



Trim thickness < 2mm



Fixture size of a tennis ball Ø68mm

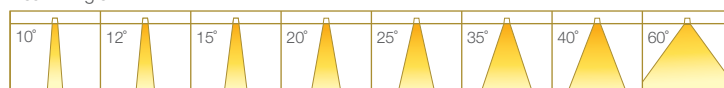
Fixture Features



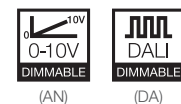
Module Colour Temperature Variation



Beam Angle

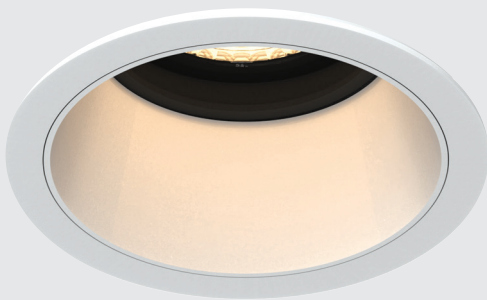


Driver Dimming Variation

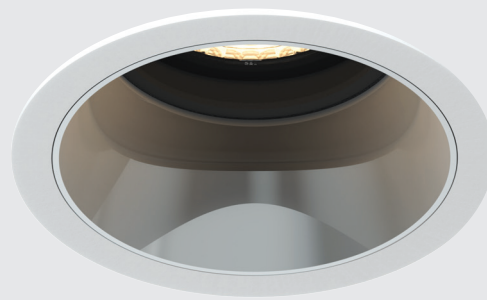


VECO 6

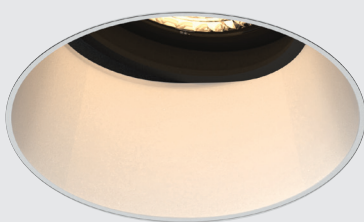
RECESSED ROUND FIX / TILT DOWNLIGHT LUMINAIRE



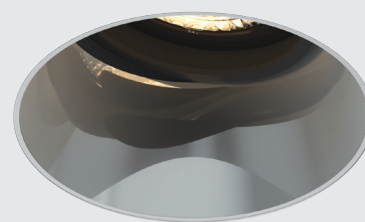
#ROUND
#FIX
#TRIM



#ROUND
#FIX
#TRIM



#ROUND
#TILT
#TRIMLESS



#ROUND
#TILT
#TRIMLESS

TECHNOLOGY AND FEATURES



Advanced Thermal Protection System



ComfyEYE
Low Flicker,
No Risk
(IEEE 1789)



Converging Optical Lens
Maximising LOR



Ceiling Safe

AVAILABLE OPTIONS

FIXTURE COLOUR OPTIONS

Trim Colour Options

MATT WHITE RAL9003

MATT BLACK RAL9011

Reflector Colour Options

MATT WHITE RAL9003

MATT BLACK RAL9011

CHROME

CHROME BLACK

CHROME GOLD



ACCESSORIES



Honeycomb Anti-Glare Louvre



Soft Lens



Linear Spread Lens



IP54

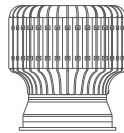


Adapter Ring

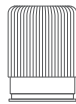
*IP54 seal accessory is valid for fix angle fixtures only.

***Adapter Ring accessory is necessary when paired with 100 series LED module variants.

LED MODULE



700P / 500P / 300P



100C/P

SINGLE CCT



2700K

3000K

3500K

4000K

5000K

ProART

ProART98

*ProART98 option is not available with 500P and 700P LED Modules.

WARM DIM



100P

tuneWHITE



300P

**tuneWHITE and flexiK are recommended to be paired with Soft Lens for better colour mixing effect.

flexiK



100P

RGBW



700P / 100P

*Drivers for RGBW / RGBA LED modules are sold separately.

RGBA



700P

	12°	15°	20°	35°	60°
700P / 500P / 300P		✓		✓	✓
100P / 100C	✓		✓	✓	✓
100P	✓		✓	✓	✓
300P		✓		✓	✓
100P			✓	✓	✓
700P / 100P				✓	✓
700P				✓	✓

DRIVER DIMMING



(ND)



(PH)



(AN)



(DA)

*Phase dimming option is not available with 500P and 700P LED Modules.

VECO 6

#ROUND
#FIX
#TILT
#TRIM
#TRIMLESS

SPECIFICATIONS

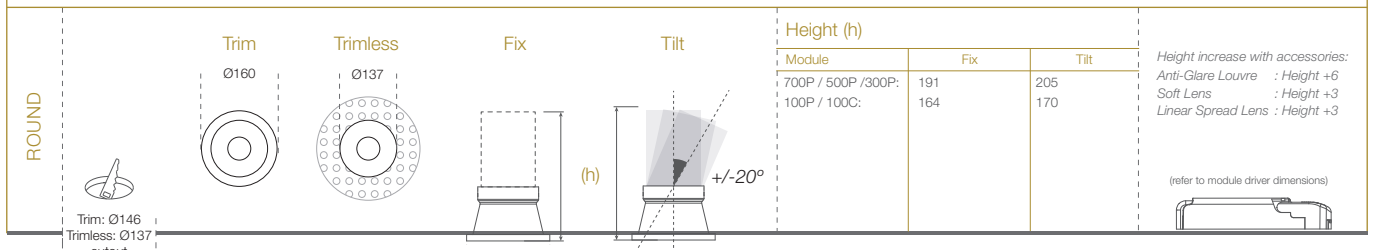
FITTURE	
Family Type	Veco series
Fixture Colours	Matt white, matt black
Reflector Colours	Matt white, matt black, chrome, chrome black, chrome gold
Fixture Materials	Aluminium
Accessories	Honeycomb anti-glare louvre, soft lens, linear spread lens, IP54 seal
Ingress Protection	IP40, IP54
LED MODULE & DRIVER	
Compatible LED Modules	700, 500, 300, 100 series LED modules
Lifetime	Up to 50,000 hours L80 lamp life with LM80 tested LED chip packages
Beam Angles	12°, 15°, 20°, 35°, 60°
Colour Temperatures	2700K, 3000K, 3500K, 4000K, 5000K, Warm Dim, tuneWHITE, flexiK
CRI	High Efficiency (CRI-85), ProART (CRI-95), ProART98 (CRI-98)
Driver (Dimming)	Non-dim, phase (leading & trailing edge), 0-10V, DALI

100 Pro /
100 Classic

300 / 500 /
700 Pro



DIMENSIONS (MM)



VECO 6

PHOTOMETRICS

700 PRO



Height (m)		Emax (lx)		
		15°	35°	60°
1	E(0°)	56948	18802	7333
	Cone Ø (m)	0.27	0.61	1.09
2	E(0°)	14237	4700	1833
	Cone Ø (m)	0.54	1.22	2.17
3	E(0°)	6328	2089	815
	Cone Ø (m)	0.81	1.83	3.26
4	E(0°)	3559	1175	458
	Cone Ø (m)	1.08	2.45	4.34
5	E(0°)	2278	752	293
	Cone Ø (m)	1.35	3.06	5.43

Correction Factor: 700P - f = 1.00
500P - f = 0.81
300P - f = 0.54

ELR LED Module				700P	500P	300P		
LED Power				66W	54W	36W		
System Power				76W	62W	43W		
Luminous Flux (lm)	Type	Beam Angle	CRI					
	Single CCT (3000K)	15°	High Efficiency Ra-85	ProART Ra-95	7520	6110	4042	
					ProART98 Ra-98			2829
					High Efficiency Ra-85	7520	6110	4042
		35°	ProART Ra-95	ProART98 Ra-98	6392	5194	3436	
							2829	
					High Efficiency Ra-85	7680	6240	4128
	60°	ProART Ra-95	ProART98 Ra-98	6528	5304	3509		
						2890		

Data are based on 3000K (ProART CRI-95). Nominal data of 2700K and 3500K are shared with 3000K. Higher CCT of 4000K and 5000K will have a nominal data value of 5% higher than published. (f = 1.05) High Efficiency CRI-85 will have a nominal data value of 15% higher than published. (f = 1.17) ProART98 CRI-98 will have a nominal data value of 18% lower than published. (f = 0.82)

Nominal CRI-85, equals to Ra>80-87, R9>0
Nominal CRI-95, equals to Ra>90-97, R9>50
Nominal CRI-98, equals to Ra>97-99, R9>93

700 PRO RGBW



Height (m)		Emax (lx)	
		35°	60°
1	E(0°)	8101	3160
	Cone Ø (m)	0.61	1.09
2	E(0°)	2025	790
	Cone Ø (m)	1.22	2.17
3	E(0°)	900	351
	Cone Ø (m)	1.83	3.26
4	E(0°)	506	197
	Cone Ø (m)	2.45	4.34
5	E(0°)	324	126
	Cone Ø (m)	3.06	5.43

Correction Factor: 700P RGBW - f = 1.00
700P RGBA - f = 0.82

ELR LED Module				700P	
LED Power				64W	
System Power				74W	
Luminous Flux (lm)	Type	Beam Angle	CRI		
	RGBW	35°	N/A		2754
					2813
		60°	N/A		2270
					2318

Data are based on maximum output of all 4 RGBW channels.

300 PRO TUNEWHITE/FLEXIK



Height (m)		Emax (lx)		
		15°	35°	60°
1	E(0°)	25124	8295	3235
	Cone Ø (m)	0.27	0.61	1.09
2	E(0°)	6281	2074	809
	Cone Ø (m)	0.54	1.22	2.17
3	E(0°)	2792	922	359
	Cone Ø (m)	0.81	1.83	3.26
4	E(0°)	1570	518	202
	Cone Ø (m)	1.08	2.45	4.34
5	E(0°)	1005	332	129
	Cone Ø (m)	1.35	3.06	5.43

ELR LED Module				300P	
LED Power				36W	
System Power				43W	
Luminous Flux (lm)	Type	Beam Angle	CRI		
	tuneWHITE/flexiK (4000K / 6500K)	15°	ProART Ra-95		2820
					2820
		35°			2820
					2880
60°				2880	

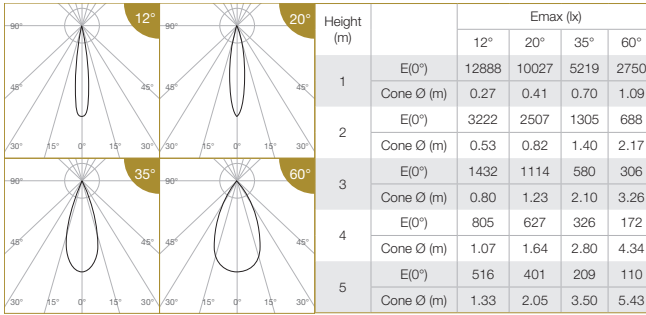
Data are based on maximum output at highest CCT (4000K / 6500K). 2700K will have a nominal data value of 10% lower than published. (f = 0.90) 1800K will have a nominal data value of 30% lower than published. (f = 0.70)

Nominal CRI-95, equals to Ra>90-97, R9>50

VECO 6

PHOTOMETRICS

100 PRO



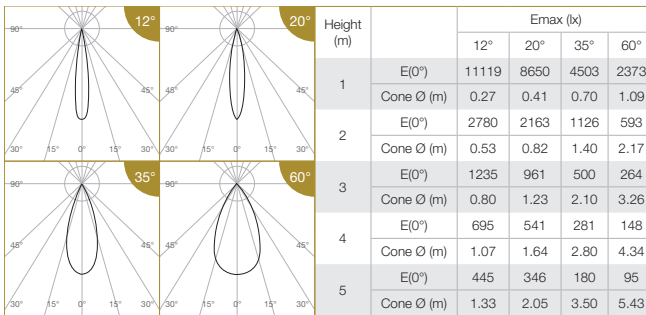
Correction Factor:
 100P - f = 1.00
 100C - f = 0.69

ELR LED Module				100P	100C	
LED Power				23W	17W	
System Power				28W	21W	
Luminous Flux (lm)	Single CCT (3000K)	Type	Beam Angle	CRI		
				High Efficiency Ra-85		2490
		ProART Ra-95		2117	1453	
		ProART98 Ra-98		1743	1197	
		12°	High Efficiency Ra-85		2820	1936
			ProART Ra-95		2397	1646
			ProART98 Ra-98		1974	1355
		20°	High Efficiency Ra-85		2880	1978
			ProART Ra-95		2448	1681
			ProART98 Ra-98		2016	1384
		35°	High Efficiency Ra-85		2880	1978
			ProART Ra-95		2448	1681
ProART98 Ra-98			2016	1384		
60°	High Efficiency Ra-85		2880	1978		
	ProART Ra-95		2448	1681		
	ProART98 Ra-98		2016	1384		

Data are based on 3000K (ProART CRI-95). Nominal data of 2700K and 3500K are shared with 3000K. Higher CCT of 4000K and 5000K will have a nominal data value of 5% higher than published. (f = 1.05)
 High Efficiency CRI-85 will have a nominal data value of 15% higher than published. (f = 1.17)
 ProART98 CRI-98 will have a nominal data value of 18% lower than published. (f = 0.82)

Nominal CRI-85, equals to Ra>80-97, R9>0
 Nominal CRI-95, equals to Ra>90-97, R9>50
 Nominal CRI-98, equals to Ra>97-99, R9>93

100 PRO WARM DIM

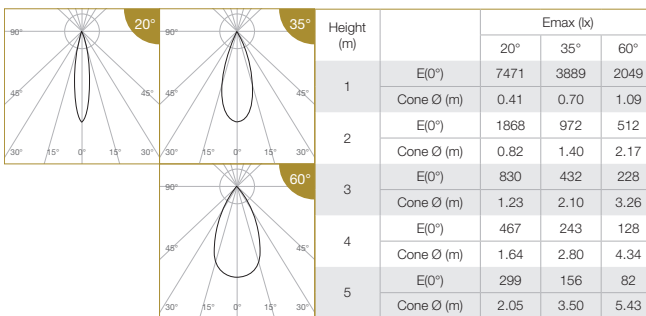


ELR LED Module				100P	
LED Power				23W	
System Power				28W	
Luminous Flux (lm)	Warm Dim (3100K)	Type	Beam Angle	CRI	
				ProART Ra-95	
		12°		2068	
		20°		2112	
		35°		2112	
		60°		2112	

Data are based on maximum output at 3100K

Nominal CRI-95, equals to Ra>90-97, R9>50

100 PRO TUNEWWHITE/FLEXIK

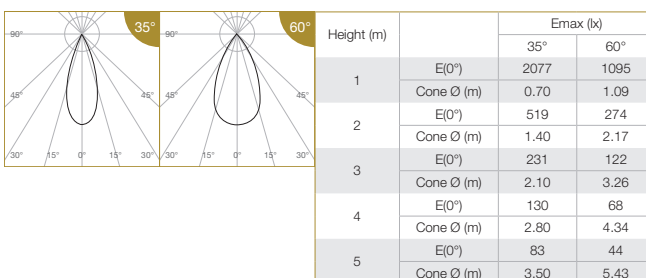


ELR LED Module				100P	
LED Power				23W	
System Power				28W	
Luminous Flux (lm)	tuneWHITE/flexiK (4000K / 6500K)	Type	Beam Angle	CRI	
				ProART Ra-95	
		20°		1824	
		35°		1824	
		60°		1824	

Data are based on maximum output at highest CCT (4000K / 6500K).
 2700K will have a nominal data value of 10% lower than published. (f = 0.90)
 1800K will have a nominal data value of 30% lower than published. (f = 0.70)

Nominal CRI-95, equals to Ra>90-97, R9>50

100 PRO RGBW

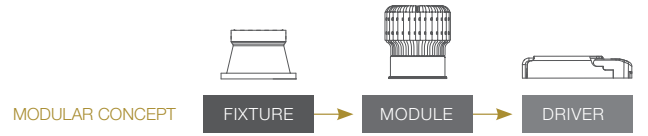


ELR LED Module				100P
LED Power				22W
System Power				26W
Luminous Flux (lm)	Type	Beam Angle	CRI	
				RGBW
	35°		N/A	974
	60°		N/A	974

Data are based on maximum output of all 4 RGBW channels.

Reduced Glare

VECO 6



ORDERING MATRIX CHART

Fixture												
Type	Trim Options		Shape		Angle		Colour		Reflector Colour		Accessories	
VECO-6	T	Trim	RD	Round	FX	Fix	WH	Matt White	WH	Matt White	N	None
	X	Trimless			TL	Tilt	MB	Matt Black	MB	Matt Black	AGL	Anti-Glare Louvre
									CR	Chrome	SL	Soft Lens
									CB	Chrome Black	LSL	Linear Spread Lens
									CG	Chrome Gold	IP	IP54**
											ADT	Adapter Ring***

**IP54 seal accessory is valid for fix angle fixtures only.

***Adapter Ring accessory is necessary when paired with 100 series LED module variants.

Single CCT LED Module					Driver	
LED Power	Beam Angle		Colour Temp		CRI	Dimming
ELR700P	66W	15° 15°	27	2700K	HE Ra~85	ND Non-Dim
ELR500P	54W	35° 35°	30	3000K	PA ProART	PH Phase*
ELR300P	36W	60° 60°	35	3500K	PP ProART98*	AN 0-10V
			40	4000K		DA DALI
			50	5000K		
ELR100P	23W	12° 12°	27	2700K	HE Ra~85	ND Non-Dim
ELR100C	17W	20° 20°	30	3000K	PA ProART	PH Phase
		35° 35°	35	3500K	PP ProART98	AN 0-10V
		60° 60°	40	4000K		DA DALI
			50	5000K		

*ProART98 and phase dimming options are not available with ELR500P and ELR700P LED Modules.

Warm Dim LED Module						Driver	
LED Power	Beam Angle		Colour Temp		CRI	Dimming	
ELR100P	23W	12° 12°	WD	Warm Dim	PA ProART	PH Phase	
		20° 20°				AN 0-10V	
		35° 35°				DA DALI	
		60° 60°					

tuneWHITE LED Module						Driver	
LED Power	Beam Angle		Colour Temp		CRI	Dimming	
ELR300P	36W	15° 15°	TW1831	tuneWHITE 1800K-3100K	PA ProART	DA DALI	
		35° 35°	TW1840	tuneWHITE 1800K-4000K			
		60° 60°	TW2765	tuneWHITE 2700K-6500K			
ELR100P	23W	20° 20°	TW1831	tuneWHITE 1800K-3100K	PA ProART	DA DALI	
		35° 35°	TW1840	tuneWHITE 1800K-4000K			
		60° 60°	TW2765	tuneWHITE 2700K-6500K			

flexiK LED Module						Driver	
LED Power	Beam Angle		Colour Temp		CRI	Dimming	
ELR300P	36W	15° 15°	FK##	flexiK	PA ProART	PH Phase	
		35° 35°				AN 0-10V	
		60° 60°				DA DALI	
ELR100P	23W	20° 20°	FK##	flexiK	PA ProART	PH Phase	
		35° 35°				AN 0-10V	
		60° 60°				DA DALI	

denotes the first two digits of preferred CCT ranging from 1800K to 6500K by increment of 100K.

RGBW / RGBA LED Module					
LED Power	Beam Angle		Colour Temp		
ELR700P	64W	35° 35°	RGBW	Red, Green, Blue, White	
		60° 60°	RGBA	Red, Green, Blue, PC Amber	
ELR100P	22W	35° 35°	RGBW	Red, Green, Blue, White	
		60° 60°			

*Drivers for RGBW / RGBA LED modules are sold separately.

example: VECO-6.T.RD.FX.WH.CR.N.ELR300P.60.50.PA.DA

*Custom RAL colour options available.